



# VANAUKER

## COMPANIES

### WAREHOUSE SPACE FOR LEASE



#### GENERAL INFORMATION

---

<b>ADDRESS:</b>	<b>651 E. Gowen Rd. Boise, ID</b>	<b>BUILDING SIZE:</b>	<b>165,000 Square Feet 30,000 SF AVAILABLE</b>
<b>CONTACT:</b>	<b>Ron Van Auker, Jr</b>	<b>ZONING:</b>	<b>M1-D (Light Industrial)</b>
<b>PHONE:</b>	<b>(208) 887-7994</b>	<b>YEAR BUILT:</b>	<b>2008</b>
<b>FAX:</b>	<b>(208) 887-7998</b>		
<b>EMAIL:</b>	<a href="mailto:ron@vanauker.com">ron@vanauker.com</a>		

#### COMMENTS

---

- Next to the Shopko distribution warehouse on Gowen Road.
- Less than one mile from I-84/Gowen Interchange
- Ideal location for shipping and receiving. Close to Airport and accessible to freeway.
- Dock-High and Ground Level doors for product maneuvering.
- All dock doors are equipped with mechanical dock levelers and dock seals.
- ESFR fire sprinkler system to accommodate high pile storage of materials. (24' interior clear height)



# VANAUKER COMPANIES

## Area Map





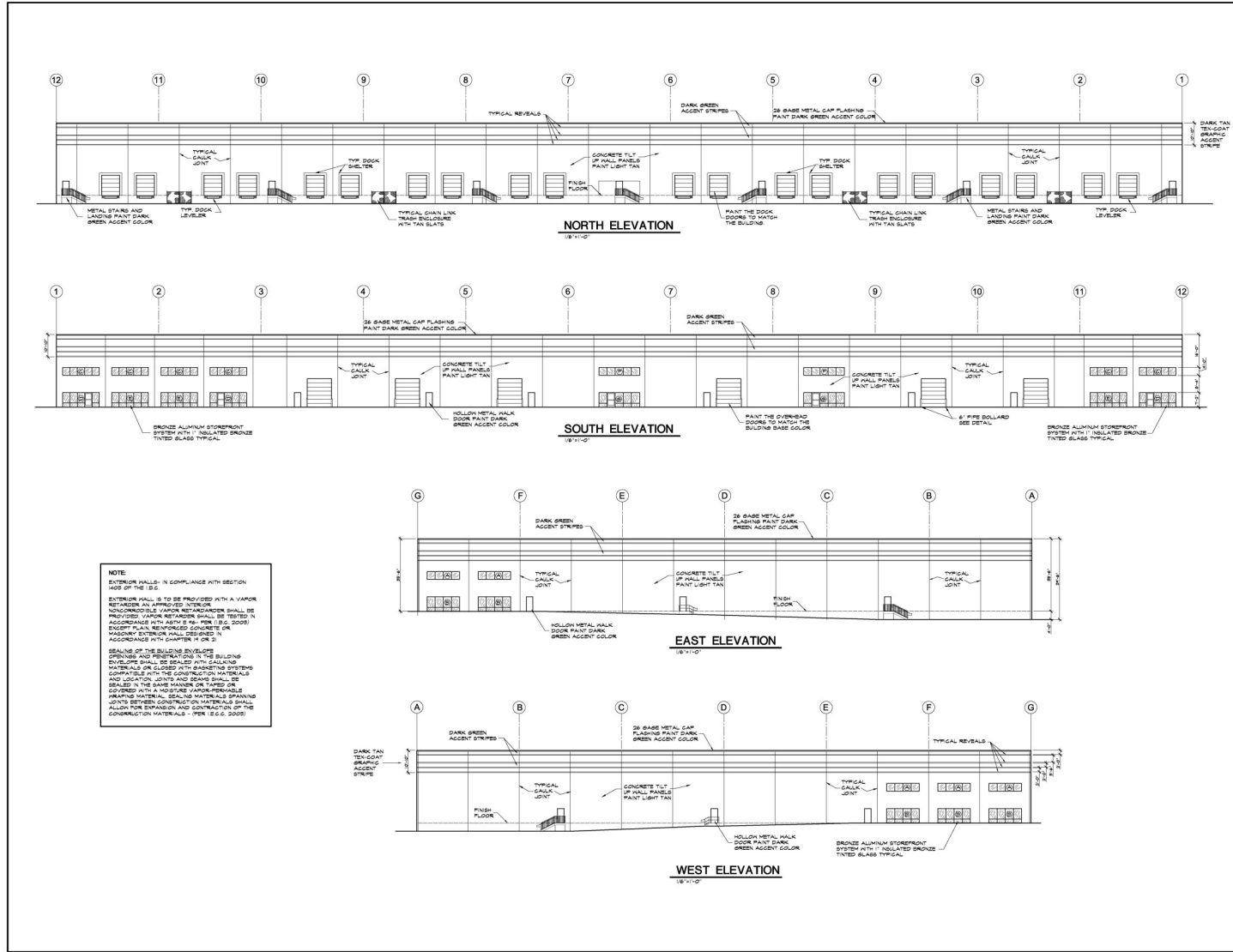




# VANAUKER

## COMPANIES

### Elevations



DESIGNED BY: J. VANAUKER	PROJECT NO: 088847-7994
CHECKED BY: J. VANAUKER	DATE: 11/15/11
APPROVED BY: J. VANAUKER	DATE: 11/15/11
SCALE: 1/8"=1'-0"	
DRAWING FILE NAME: 088847-7994	
PROJECT: 088847-7994	
SHEET: A-2	

A NEW BUILDING FOR  
**RONALD W. VAN AUKER**  
 GOWEN WAREHOUSE  
**ELEVATIONS**

**RONALD W. VAN AUKER, INC.**  
 3084 EAST LANARK  
 MERIDIAN, IDAHO  
 PHONE: (208) 887-7994 / FAX: (208) 887-7998